



Plus is a free-standing Smart Electric Heater that gives you the freedom to place it into open spaces, and thanks to its iconic presence your chosen space will become Art Gallery.

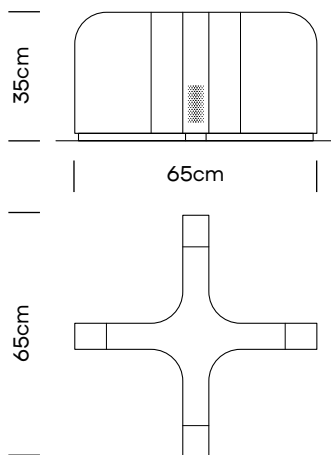
By choosing between two Plus heights, 45cm for the High Version and 35cm for the Low Version, and several finishings and materials for the body and cover, you have the unique chance to ennoble your commercial or private space.

Once you find the ideal place for Plus Smart Electric Heater you can easily control it with your mobile device.

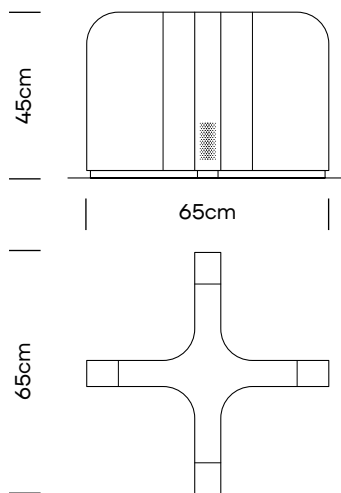


Device  
Controlled By  
Mobile App.

Plus / Small



Plus / Large



**Design:**

Zoran Jedrejic

**Code:**

Plus / Small: EPLS

Plus / Large: EPLL

**Dimensions:**

Plus / Small: 65x65x35cm

Plus / Large: 65x65x45cm

**Weight:**

Plus / Small: 15.7kg

Plus / Large: 19kg

**Finishing:**

Inox Polished

Gun Steel

Corroded Steel

**Installed Power:**

Plus / Small: 600Watt

Plus / Large: 600Watt

**Packaging Info:**

Wooden box

Max. per Box: 1 Piece

**Gross Weight:**

Plus / Small: Ca. 56.6kg

Plus / Large: Ca. 63kg

**Volume:**

Plus / Small: 0.25m<sup>3</sup>

Plus / Large: 0.30m<sup>3</sup>

**Box Size:**

Flexus / Small: 75x75x45cm

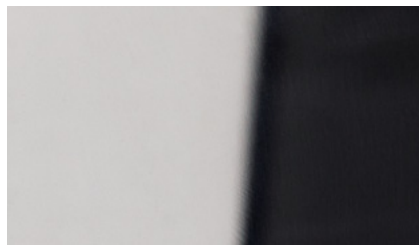
Flexus / Large: 75x75x55cm



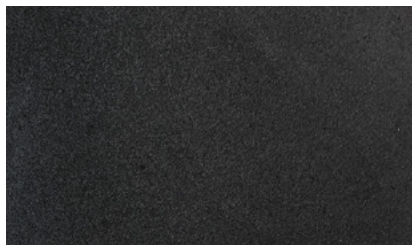
Device  
Controlled By  
Mobile App.



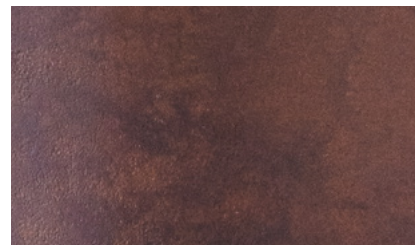
## Possible Material choice



Inox Polished



Gun Steel



Corroded Steel

The purpose of this promotional material is to provide the necessary information. We kindly ask you to take into consideration that the printed and on-screen images may differ from the actual color varieties, textures and structures of the material. We invite you to contact our authorized sales dealers in your country for any queries regarding material finishings, characteristics and appearance.