



The idea behind Flexus Smart Electric Heater Collection is so simple but brave, why not use all those underrated spaces like corners and angles to give them another life and meaning? And the answer is easy. Flexus can change the game for you and transform any corner in your public or private space into Art Corner.

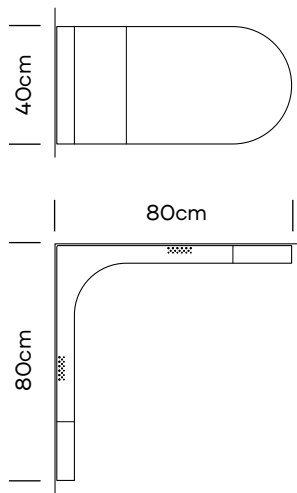
You can find the ideal Flexus for your spaces by choosing between horizontal and vertical models, different dimensions, and finishings.

Like all Smart Electric Heater from this Serie, you can easily control Flexus with your mobile device.

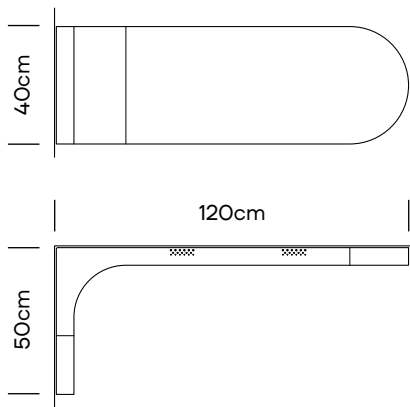


Device
Controlled By
Mobile App.

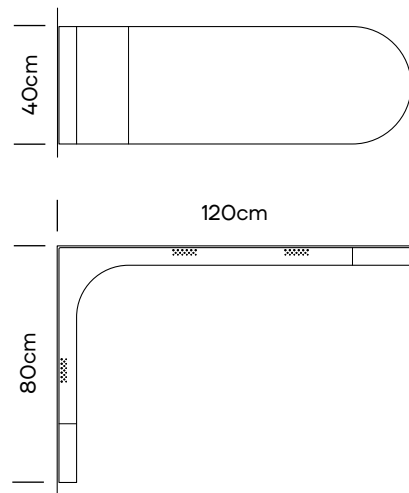
Flexus / Small



Flexus / Medium (L/R)



Flexus / Large (L/R)



Design:

Zoran Jedrejic

Code:

Flexus / Small: EFXS
Flexus / Medium: EFXM
Flexus / Large: EFXL

Dimensions:

Flexus / Small: 80x80x40cm
Flexus / Medium: 50x120x40cm
Flexus / Large: 80x120x40cm

Weight:

Flexus / Small: 32.3kg
Flexus / Medium: 36.2kg
Flexus / Large: 42.2kg

Finishing:

Inox Polished
Glossy Burned Steel
Corroded Steel

Installed Power:

Flexus / Small: 600Watt
Flexus / Medium: 300Watt
Flexus / Large: 600Watt

Packaging Info:

Wooden box
Max. per Box: 1 Piece

Gross Weight:

Flexus / Small: Ca. 84.3kg
Flexus / Medium: Ca. 88.2kg
Flexus / Large: Ca. 106.2kg

Volume:

Flexus / Small: 0.33m³
Flexus / Medium: 0.39m³
Flexus / Large: 0.59m³

Box Size:

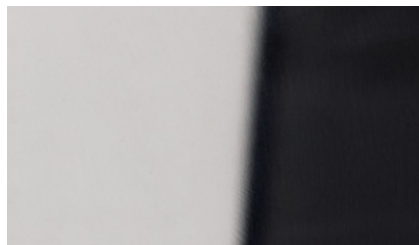
Flexus / Small: 90x90x50cm
Flexus / Medium: 60x130x50cm
Flexus / Large: 90x130x50cm



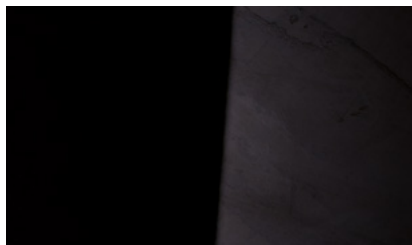
Device
Controlled By
Mobile App.



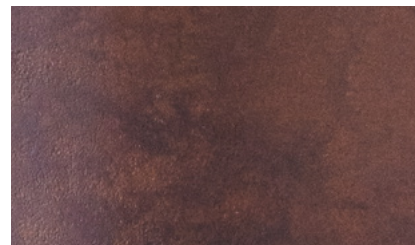
Possible Material choice



Inox Polished



Glossy Burned Steel



Corroded Steel

The purpose of this promotional material is to provide the necessary information. We kindly ask you to take into consideration that the printed and on-screen images may differ from the actual color varieties, textures and structures of the material. We invite you to contact our authorized sales dealers in your country for any queries regarding material finishings, characteristics and appearance.